



CERTIFICATE OF ANALYSIS

Certificate No : SP/08-06/1730

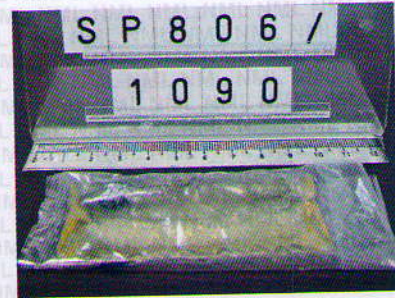
To : YUREKA SDN.BHD.
No.16, Jalan Jalak 2,
Taman Sri Bahtera,
Batu 5, Jalan Cheras,
56100 Kuala Lumpur.
Attn : Ms. Lee Peng

Page No : Page 1 of 2

Date Of Issue : 04/07/2008

Customer's Sample Description :

NIPPON STEEL EPOXY
MODEL : NS 270 A & B



Date Of Sample Received : 30/06/2008
Date Of Testing : 30/06/2008 To 04/07/2008

Objective of Test

Determination of Cadmium, Lead, Mercury, Hexavalent Chromium, PBBs and PBDEs in accordance with EU Directive 2002/95/EC (RoHS).

Standard Method / Equipment / Technique Description

USEPA Method 3052	Microwave assisted acid digestion of siliceous and organically based matrices
USEPA Method 6010B	Inductive Coupled Plasma-Atomic Emission Spectroscopy
USEPA Method 3060A	Alkaline digestion for Hexavalent Chromium
USEPA Method 7196A	Hexavalent Chromium-Colorimetric by UV/Vis Spectroscopy
USEPA Method 3540C	Soxhlet Extraction
GC/MS	Gas Chromatography-Mass Spectrometry

Measurement flowchart (Issue upon request)

Refer to Appendix A - Measurement for Cadmium, Lead and Mercury
Appendix B - Measurement for Chromium Hexavalent
Appendix C - Measurement for PBB & PBDE

For NM LABORATORY SDN. BHD.

JOB NO.: SP806/1090
Test performed by : Ms. Tan Hooi Cheng
Ms. Lim Sie Hui

Certified By: _____
Yeap Cheo Mooi, M. Sc, AMIC
Operation Manager



Certificate No.: SP/08-06/1730
Date of Issue : 04/07/2008
Customer : YUREKA SDN.BHD.

Analysis Result

Type of Analysis/Parameters/Properties measured	Analysis Results	Unit	Preconditioning Method / Technique	Measurement Method / Equipment	MDL; mg/kg	RoHS Limit; mg/kg
Cadmium (as Cd)	ND	mg/kg	USEPA Method 3052	USEPA Method 6010B	0.5	100
Lead (as Pb)	ND				1	1000
Mercury (as Hg)	ND				5	
Chromium Hexavalent (as Cr ⁶⁺)	ND				USEPA Method 3060A	USEPA Method 7196A

Chemical compound	Analysis Result	Unit	Preconditioning Method	Measurement Method	MDL; mg/kg	RoHS Limit; mg/kg
Polychlorinated Biphenyls (PCBs)	Monobromobiphenyl	mg/kg	USEPA Method 3540C	GC/MS	5	-
	Dibromobiphenyl					
	Tribromobiphenyl					
	Tetrabromobiphenyl					
	Pentabromobiphenyl					
	Hexabromobiphenyl					
	Heptabromobiphenyl					
	Octabromobiphenyl					
	Nonabromobiphenyl					
	Decabromobiphenyl					
Total PBBs					-	1000

Chemical compound	Analysis Result	Unit	Preconditioning Method	Measurement Method	MDL; mg/kg	RoHS Limit mg/kg
Polychlorinated Diphenyl Ethers (PCDEs)	Monobromodiphenyl ether	mg/kg	USEPA Method 3540C	GC/MS	5	-
	Dibromodiphenyl ether					
	Tribromodiphenyl ether					
	Tetrabromodiphenyl ether					
	Pentabromodiphenyl ether					
	Hexabromodiphenyl ether					
	Heptabromodiphenyl ether					
	Octabromodiphenyl ether					
	Nonabromodiphenyl ether					
	Decabromodiphenyl ether					
Total PBDEs					-	1000

Remark : The test portion was "Totally Dissolved" for Cadmium, Lead & Mercury test by using pre-conditioning method as mentioned above.

Conclusion : The sample analysis results were not exceed the maximum concentration values for Cd, Pb, Hg, Cr⁶⁺, PBB and PBDE as stipulated in amendment 2005/618/EC of EU Directive 2002/95/EC (RoHS).